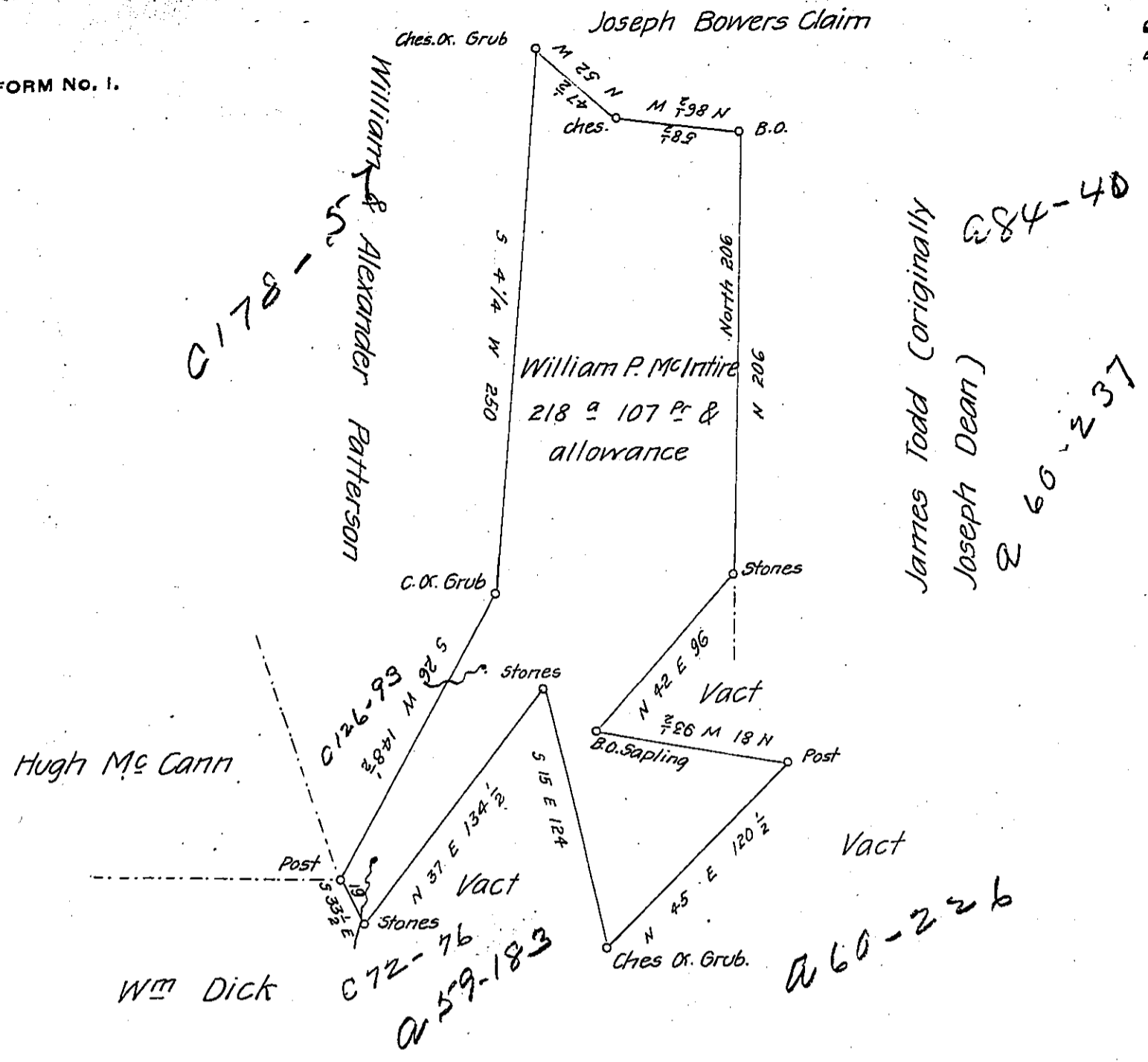


FORM NO. 1.



A 84-38

Surveyed to Wm P McIntire 19<sup>th</sup> of March 1840 the above described tract of two hundred and eighteen acres & one hundred and seven perches & allowance Situate in Brushvalley township Indiana County adjoining lands of James Todd Wm & Alex<sup>dr</sup> Patterson and others including his improvement By Warrant of 23<sup>rd</sup> January 1840.

Robert McGee D.S.

To Jacob Sallade Esq<sup>r</sup>  
S. Gen<sup>l</sup> of Pa.

IN TESTIMONY that the above is a copy of the original remaining on file in the Department of Internal Affairs of Pennsylvania, made conformably to an Act of Assembly approved the 16th day of February, 1833, I have hereunto set my Hand and caused the Seal of said Department to be affixed at Harrisburg, this thirteenth day of March 1906

*Isaac P. Brown*  
Secretary of Internal Affairs.